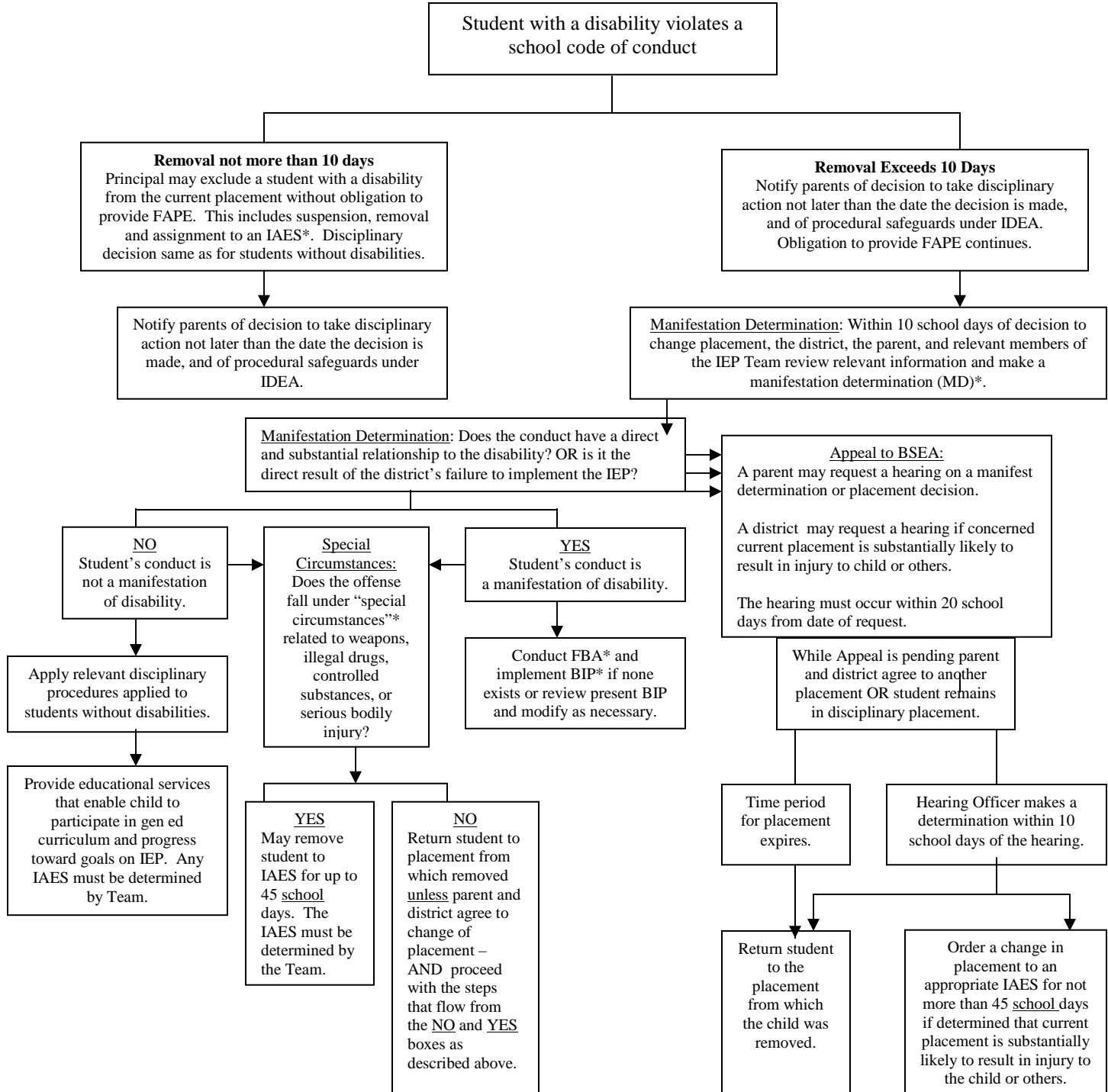


Placement in Disciplinary Procedures

Under IDEA 2004: Section 615(k)

(to be read in conjunction with state law under M.G.L. c.71, §§ 37H & 37H1/2)

A Principal may consider any unique circumstances on a case-by-case basis when determining whether to order a change in placement for a student with a disability who, after a disciplinary hearing, has been found to have violated a school code of conduct.



***DEFINITIONS & ACRONYMS can be found on the next page**

***DEFINITIONS & ACRONYMS**

IAES - interim alternative educational setting

FAPE - Free and Appropriate Public Education – the student continues to receive educational services while in an IAES in order to progress toward meeting the goals set out in the student's IEP

FBA - Functional Behavioral Assessment

BIP – Behavioral Intervention Plan for dispensing Behavior Intervention Services

Manifestation Determination – determine if the conduct in question was caused by, or had a direct and substantial relationship to, the student's disability; or if the conduct in question was the direct result of the LEA's failure to implement the IEP.

Special Circumstances – carries or possesses a weapon to or at school, on school premises, or to or at a school function under the jurisdiction of a State or local educational agency (LEA); knowingly possesses or uses illegal drugs, or sells or solicits the sale of a controlled substance, while at school, on school premises, or at a school function under the jurisdiction of a State or local educational agency; or has inflicted serious bodily injury upon another person while at school, on school premises, or at a school function under the jurisdiction of a State or local educational agency.

Serious Bodily Injury – bodily injury that involves a substantial risk of death, extreme physical pain, protracted and obvious disfigurement, or protracted loss or impairment of the function of a bodily member, organ, or mental faculty.